



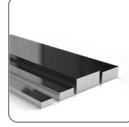
 PRODUCT CATALOG

# Carbon Steel

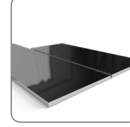
ROUND



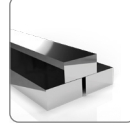
FLAT



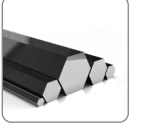
PLATE



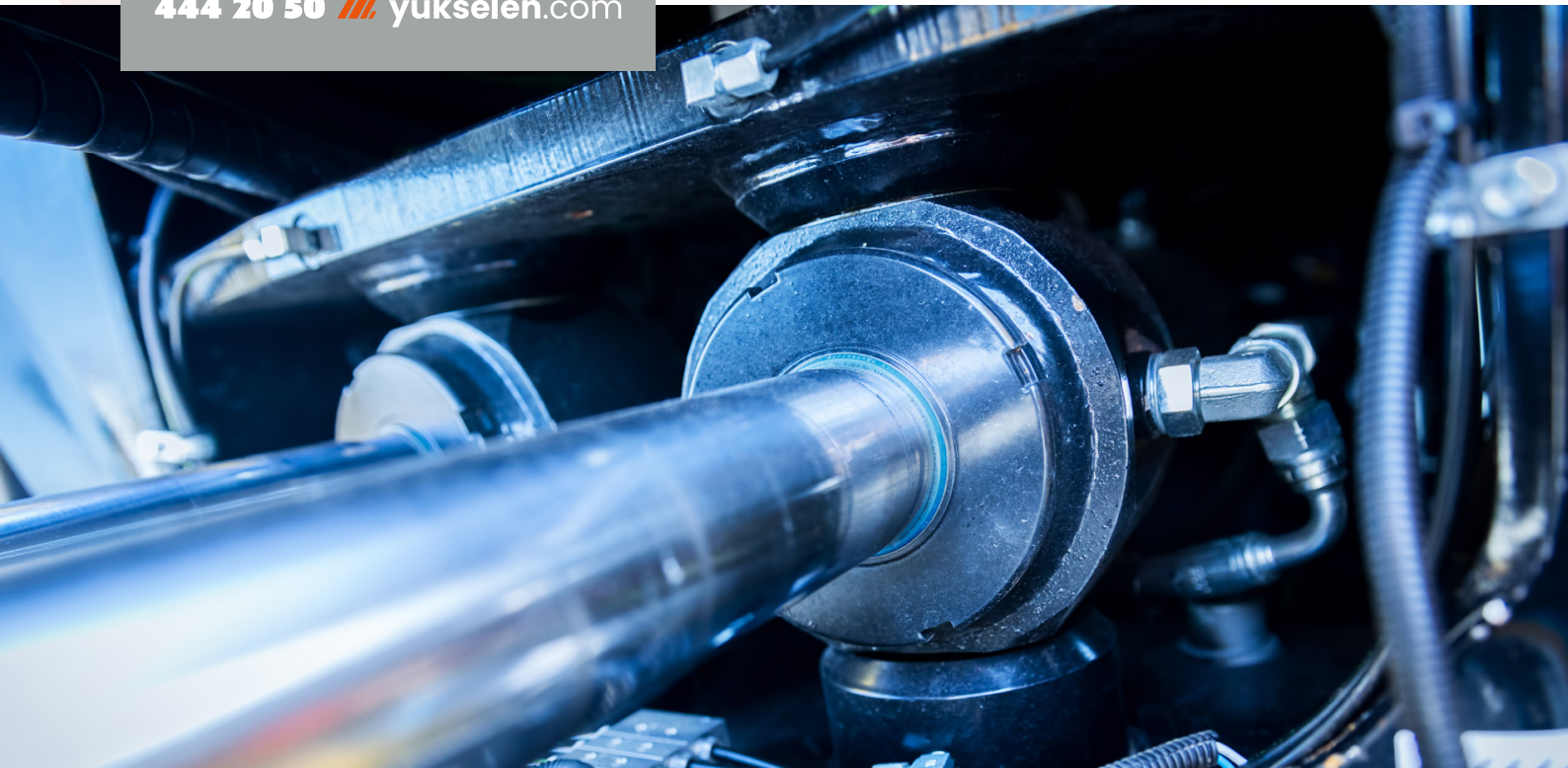
BLOCK



HEXAGON



444 20 50  [yukselen.com](http://yukselen.com)

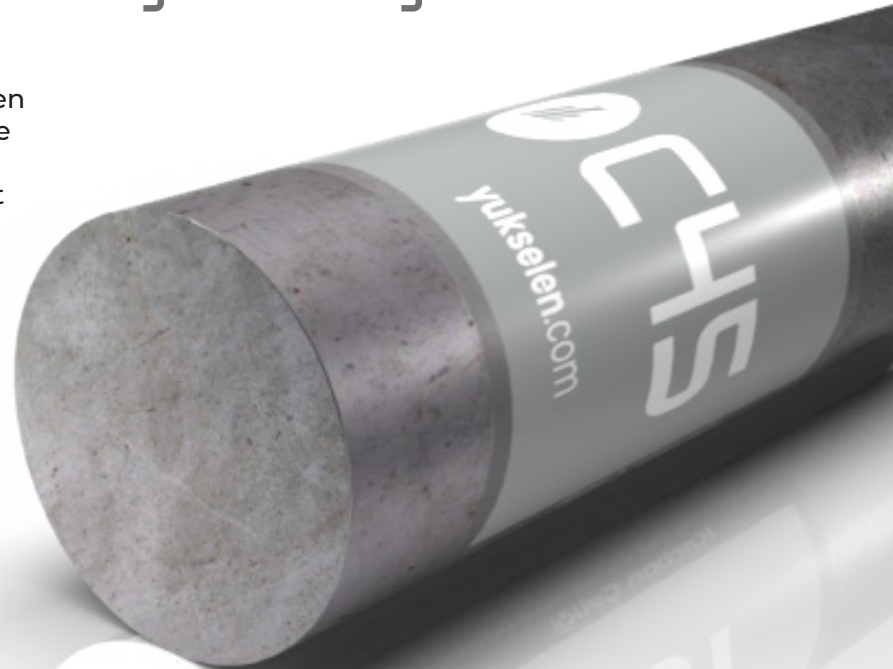


# Carbon Steel

## C45 DIN C45 (SAE 1045)

### Favorite of Manufacturing Industry

It is the most widely used long bar special steel in all manufacturing industry. Yükselen always keeps ready stock of round bars size range 20-1500 mm ; as well as it is also market leader in Turkey with its plate & flat product.

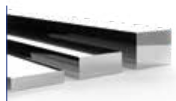


#### Shapes & Sizes



##### Rounds

Rolled	10 - 340 mm
Forged	200 - 1,500 mm



##### Flats

Plate	20 - 200 x 700 - 2,000 mm
Square	20 - 1,000 mm
Flat	20 - 400 x 100 - 610 mm
Block	200 - 1,000 x 500 - 2,000 mm

#### Chemical Composition

DIN C45 (SAE 1045)		C	Si	Mn	P	S	Cr	Mo	Ni
	min	0,42	0,00	0,50	0,00	0,00	0,00	0,00	0,00
	max	0,50	0,40	0,80	0,045	0,045	0,40	0,10	0,40



# Carbon Steel

## C40-C50

DIN C40 (SAE 1040)  
DIN C50 (SAE 1050)

### Manufacturing Steel

Instead of C45 grade, Customer can prefer C40 grade if they need lower carbon or C50 grade if they need higher carbon products. Yukselen keeps ready stock of these grades as domestic materials with 20-260 mm diameters and import materials with 270-3.400 mm diameters.

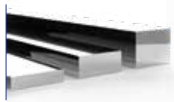


### Shapes & Sizes



#### Rounds

Rolled	10 - 340 mm
Forged	200 - 1,500 mm



#### Flats

Square	20 - 1,000 mm
Flat	20 - 400 x 100 - 610 mm
Block	200 - 1,000 x 500 - 2,000 mm

### Chemical Composition

DIN C40 (SAE 1040)		C	Si	Mn	P	S
	min	0,37	-	0,60	0,00	0,00
	max	0,44	-	0,90	0,03	0,05

DIN C50 (SAE 1050)		C	Si	Mn	P	S
	min	0,48	-	0,60	0,00	0,00
	max	0,55	-	0,90	0,03	0,05



# Carbon Steel

## S355

DIN S355JR (ST 52)

### More Flexible & Less Brittle

It's the highest flexibility an the least brittle carbon steel grade in construction & special steel groups.

Yükselen always keep ready stock of round, plate, flat and square bats.

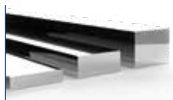


#### Shapes & Sizes



##### Rounds

Rolled	10 - 340 mm
Forged	200 - 1,500 mm



##### Flats

Square	20 - 1,000 mm
Flat	20 - 400 x 100 - 610 mm
Block	200 - 1,000 x 500 - 2,000 mm

#### Chemical Composition

DIN S355JR (ST 52)		C	Si	Mn	P	S	N
	min	0,00	0,00	0,00	0,00	0,00	0,00
	max	0,24	0,55	1,60	0,045	0,045	0,009



# Carbon Steel

## S275

DIN S275JR (ST 44)

### Affordable Structural Steel

S275 (St 44) grade is preferred in many production areas. It is prominent product, especially in plate and flat groups.

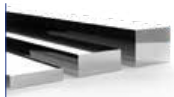


#### Shapes & Sizes



##### Rounds

Rolled 10 - 340 mm  
Forged 200 - 1,500 mm



##### Flats

Square 20 - 600 mm  
Flat 10 - 120 x 80 - 610 mm  
Block 150 - 600 x 200 - 1,200 mm

#### Chemical Composition

DIN S275JR (ST 44)		C	Si	Mn	P	S	N
	min	0,00	-	0,00	0,00	0,00	0,00
	max	0,21	-	1,50	0,045	0,045	0,009





# Carbon Steel

## S235

DIN S235JR (ST 37)

### Affordable Manufacturing Steel

It is start up product of the manufacturing steel group. It is preferred to achieve economical cost. It has widely used area in turkey especially in flat group

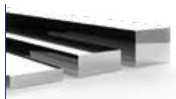


#### Shapes & Sizes



##### Rounds

Rolled 10 - 340 mm  
Forged 200 - 1,500 mm



##### Flats

Square 20 - 600 mm  
Flat 10 - 120 x 80 - 610 mm  
Block 150 - 600 x 200 - 1,200 mm

#### Chemical Composition

DIN S235JR (ST 37)		C	Si	Mn	P	S	N
	min	0,00	0,00	0,00	0,00	0,00	0,00
	max	0,17	0,30	1,40	0,045	0,045	0,009



# Carbon Steel

## Other Carbon Steel Grades

 1010

 1020

 1030

 1060

### Chemical Composition

SAE 1010		C	Si	Mn	P	S
	min	0,08	-	0,30	0,00	0,00
	max	0,13	-	0,60	0,03	0,05

SAE 1020		C	Si	Mn	P	S
	min	0,18	-	0,30	0,00	0,00
	max	0,23	-	0,60	0,03	0,05

SAE 1030		C	Si	Mn	P	S
	min	0,28	-	0,60	0,00	0,00
	max	0,34	-	0,90	0,03	0,05

SAE 1060		C	Si	Mn	P	S
	min	0,55	-	0,60	0,00	0,00
	max	0,65	-	0,90	0,03	0,05

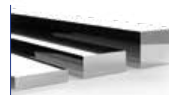
Yukselen offers forgings, ring, special productions ship-building area space and many special shaped products to customers with reasonable delivery times which are produced in its facility or in the sources which is Yukselen has distributionship.

### Shapes & Sizes



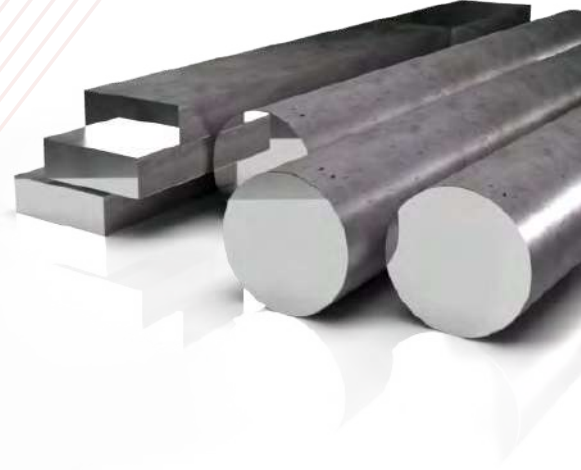
#### Rounds

Rolled 10 - 340 mm  
Forged 200 - 1,500 mm



#### Flats

Square 20 - 600 mm  
Flat 10 - 120 x 80 - 610 mm  
Block 150 - 600 x 200 - 1,200 mm



**444 20 50** // [yukselen.com](http://yukselen.com)

**MERKEZ (ESENİYURT) //**

Osmangazi Mahallesi  
2647. Sokak No: 40/1  
34538 Esenyurt, İstanbul  
**T: 444 20 50**

**DUDULLU ŞUBESİ //**

Dudullu OSB, DES San. Sit.  
1. Cd. Tic. Merkezi No: 3/37  
34775 Ümraniye, İstanbul  
**T: (216) 593 32 32**

**İZMİR (EGE) ŞUBESİ //**

Atatürk Org. San. Bölge.  
10022. Sk. No: 18  
35580 Çiğli, İzmir  
**T: (232) 600 03 03**

**YÖNETİM (ATAKÖY ŞUBESİ) //**

Ataköy Towers A Blok Kat 10  
No: 142 Ataköy E-5 Yanyol  
34158 Bakırköy, İstanbul  
**T: (212) 661 89 89**

**DİLOVASI ŞUBESİ //**

Kocaeli Kobi OSB  
Köseler Mah. 4. Cd. No: 19  
41455 Dilovası, Kocaeli  
**T: 444 20 50**

**EXPORT OFFICE //**

Avrupa Konutları A-Ofis Kat 6  
No: 23 Ataköy E-5 Yanyol  
34158 Bakırköy, İstanbul  
**T: (212) 661 11 57**